



## properties of snail slime:

1. Deeply hydrates and firms the skin
2. Slows down the ageing process
3. Supports skin regeneration to make it look visibly younger
4. Reduces wrinkles and prevents new ones
5. Helps treat skin with juvenile acne and rosacea
6. Supports the care of allergy-prone skin
7. Helps smoothen scars and stretch marks
8. Supports the treatment of sunburns
9. Supports the regeneration of skin and nails
10. Supports healing wounds and skin lesions

# 100% snail slime filtrate used by Molluscoo contains in its natural form:

### ALLANTOIN

intense hydration with a soothing and antiinflammatory effect, soothes irritation and accelerates skin regeneration

### PROTEINS AND VITAMINS

active proteins and vitamins A, C, and E protect against free radicals, supporting the lightening of pigment spots

### NATURAL ANTIBIOTICS

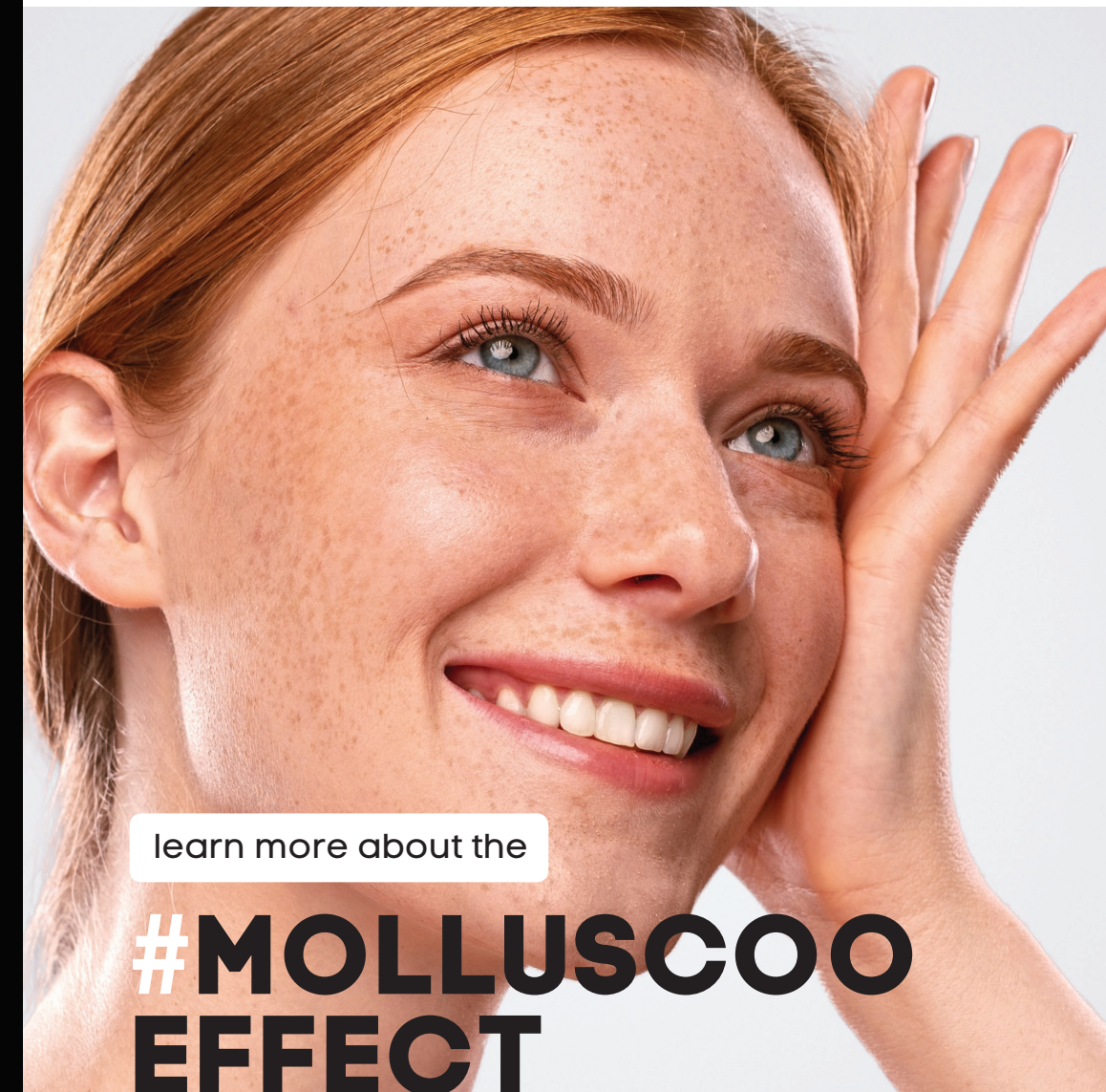
eliminate bacteria and fungi, effectively combating, among others, Escherichia Coli, Staphylococcus Aureus and Pseudomonas Aeruginosa, which are most commonly found in skin infections

### COLLAGEN AND ELASTIN

Main elements of the connective tissue, which the skin loses with ageing; their high content in Molluscoo snail slime improves the elasticity and firmness of skin

### GLYCOLIC ACID

Causes natural exfoliation (peeling of the skin), acting as a mild peeling, it removes dead cells from the surface of the skin, allowing new cells to emerge



learn more about the

# #MOLLUSCOO EFFECT



**Second generation beauty products**  
with high content of 100% filtered snail slime of Helix Aspersa

## DAY-NIGHT CARE CREAM



### Recommended for:

Daily care of all skin types, especially recommended for dry, dehydrated and delicate skin of face, neck, and neckline. Perfect as a make-up base.

### Action:

- Strengthens the barrier function of skin,
- Restores hydro lipid balance,
- Noticeably improves the firmness and elasticity

### Effect:

The skin is firm, hydrated and nourished.

---

**97% ingredients of natural origin**

## MULTI EFFECT MASK ON TEXTILE



### Recommended for:

The product is designed for intensive care of all types of skin. Especially recommended for skin that needs an energy and hydration boost. Perfect before a great evening out.

### Action:

- Improves skin firmness and elasticity,
- Long-term hydration,
- Smooth and velvety soft skin,
- Reduces most small wrinkles,
- Restores natural beauty and vitality.

### Effect:

Smooth, younger, radiant, and relaxed skin.

---

**98% ingredients of natural origin**

## HAIR THERAPY HAIR MASK



### Recommended for :

damaged, coloured, dry and brittle hair

### What does it do:

- Optimum hydration and smoothening,
- Protection against static electricity.

### Effects:

Unique vitality and shine

---

**98% ingredients of natural origin**

### Recommended for:

Daily care of all types of skin.

### Action:

- Visibly soothes and hydrates,
- Noticeably improves firmness and elasticity of skin.

### Effect:

Smooth, hydrated, and soothed skin.

---

**98% ingredients of natural origin**

## DAY-NIGHT CARE SERUM



### Recommended for:

Facial care, especially after shaving. Perfectly compatible with the skin.

### Action:

- Strengthens the barrier function of skin
- Restores hydro lipid balance
- Optimal soothing and hydration
- Cooling and refreshing properties

### Effects:

Hydrated, soothed, smooth skin.

---

**98% ingredients of natural origin**

## MULTI-EFFECT FACE BALM FOR MEN



### Recommended for:

Damaged, coloured, dry and brittle hair

### Action:

- Optimal strengthening and hydration
- Prevents hair static electricity

### Effects:

Unique vitality and shine

---

**98% ingredients of natural origin**

## HAIR THERAPY SHAMPOO

